



NEWINGTON
LONDON

2 Bedrooms

Apartment

Located in London

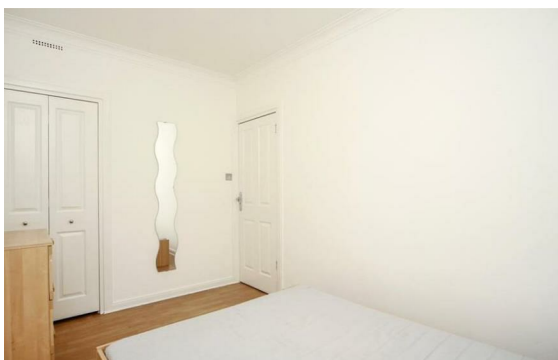
£865 Per Month



info@newingtonstates.com

<http://www.newingtonstates.com>

020 7724 2233



NEWINGTON

LONDON

60 Upper Montagu Street

London

W1H 1SN

020 7724 2233

info@newingtonstates.com

Set on the third floor, this well-proportioned apartment offers two generous double bedrooms and two bathrooms. The property features a bright reception room with a fitted kitchen and benefits from wood flooring throughout.

The property also enjoys the service of a morning porter and is ideally located close to Baker Street Station, Marylebone High Street, and the open spaces of Regent's Park.

EPC rating: C

Energy Efficiency Rating: C

Agents Note: Whilst every care has been taken to prepare these particulars, they are for guidance purposes only. All measurements are approximate and are for general guidance purposes only and whilst every care has been taken to ensure their accuracy, they should not be relied upon and potential buyers/tenants are advised to recheck the measurements.

<http://www.newingtonstates.com>